

Studio 5000 Automation Engineering & Design Environment™

Enhance Productivity through Simplified System Development

Overview

The Studio 5000® environment combines elements of design into one standard framework that optimizes productivity and reduces time to commission.

This intuitive integrated design environment focuses on rapid design, re-use, collaboration and virtual design and is built on a foundation consisting of several core tenants.

With the Studio 5000 Applications you can:

- Build and maintain a system layout in a central place with **Architect™**
- Configure, program and maintain your Logix 5000™ family of controllers with **Logix Designer®**
- Create intuitive, modern screens for the PanelView™ 5000 graphic terminals with **View Designer™**
- Create and leverage re-usable libraries of content for rapid project development with **Application Code Manager**
- Simulate your control system in a safe, virtual environment while reducing project cost and risk with **Logix Emulate™**

Rockwell Software

Studio 5000®



LISTEN.
THINK.
SOLVE.®

Allen-Bradley • Rockwell Software

**Rockwell
Automation**

Studio 5000 Architect

Studio 5000 Architect is the central point within the Studio 5000 environment where users can view the overall automation system; configure devices such as controllers, Human Machine Interface (HMI) and Electronic Operator Interface (EOI); and manage the communications between the devices. The Studio 5000 Architect application also exchanges data with other Studio 5000 applications and third-party electrical design tools to simplify the development experience.

This helps streamline the time to build your Logix and View automation system and allows you to:

- Create a graphical representation of your system for easier system modifications
- Build Logix and View projects from an integrated environment
- Re-use Logix and View content as well as use content from the Rockwell Automation Library of Process Objects
- Exchange hardware configuration data with third party tools

Manage the System Layout



Studio 5000 Logix Designer

Studio 5000 Logix Designer is the one application to configure, program and maintain the entire Allen-Bradley® Logix 5000 family of controllers products and related devices. Its intuitive programming environment allows users to work collaboratively to design and maintain their systems.

One programming software for all disciplines – safety motion, drives, process and discrete.

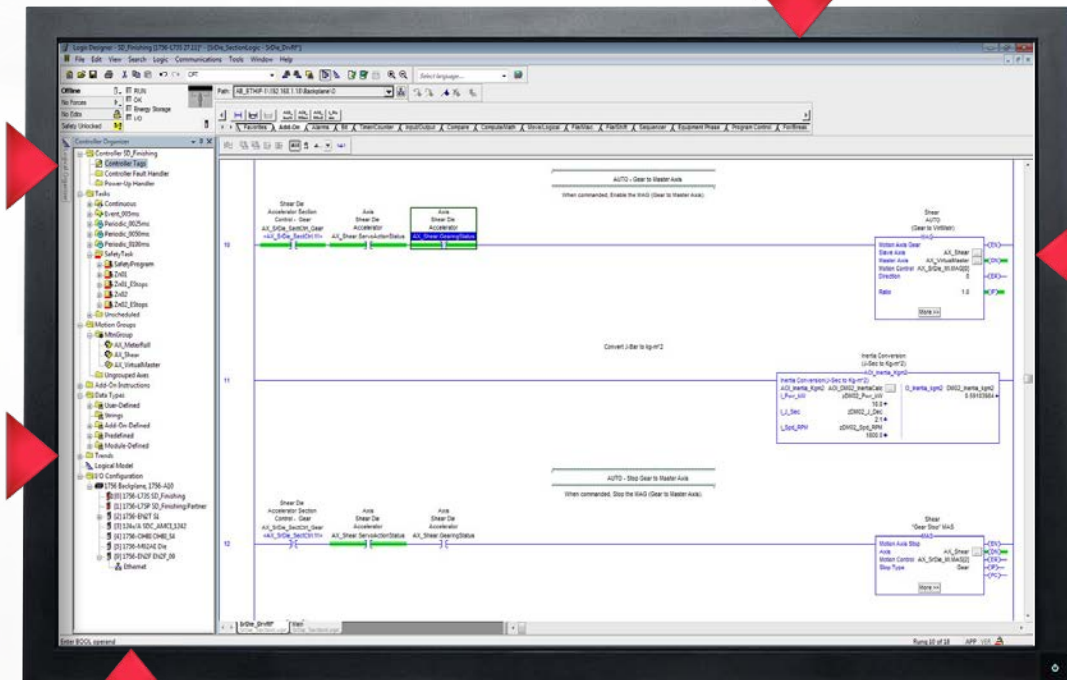
- Easily configure devices with graphical wizards and automatically create tags
- Simplified programming with multiple languages and modularity features
- View the system and find what you need easily with the Logical Organizer and Controller Organizer views – helping maintain uptime
- Create code simultaneously with others, and then compare and merge changes

Instruction Palette contains over 250 predefined instructions

Project Explorer offers multiple views to help define organization and execution

Integrated Motion and Integrated Safety in an intuitive design environment

Feature-rich editors help efficiently write modular code



Powerful and easy-to-use device configuration simplifies setup and integration

Configure, Program and Maintain Your Controllers

Studio 5000 View Designer

Studio 5000 View Designer is the design environment for the PanelView 5500 family of operator terminals. The integration of the PanelView 5500 with Studio 5000 View Designer helps build modern applications more easily and improve operator performance.

The View Designer application provides an intuitive, modern design environment and enhances integration between the control system and operator interface to improve programming efficiency and runtime performance.

- Searchable toolbox of graphic elements that have built-in animations to simplify configuration
- Preconfigured banner, alarm summary and diagnostic displays help reduce design time
- Shared Logix Tags help simplify engineering time by allowing your controller tags to be used in your terminal without having to create HMI tags
- Logix-based alarms are automatically available on the PanelView 5500 to eliminate additional alarm programming and help to reduce network traffic
- High-speed button control provides quick response and feedback for machine jogging applications

Configure, Program and Maintain Your Operator Interfaces

*Project Explorer
to easily develop
screens and menus*

*Searchable toolbox
of graphic elements
for screens*

*Integrated data
sharing between
View Designer
application and
Logix system*



Studio 5000 Application Code Manager

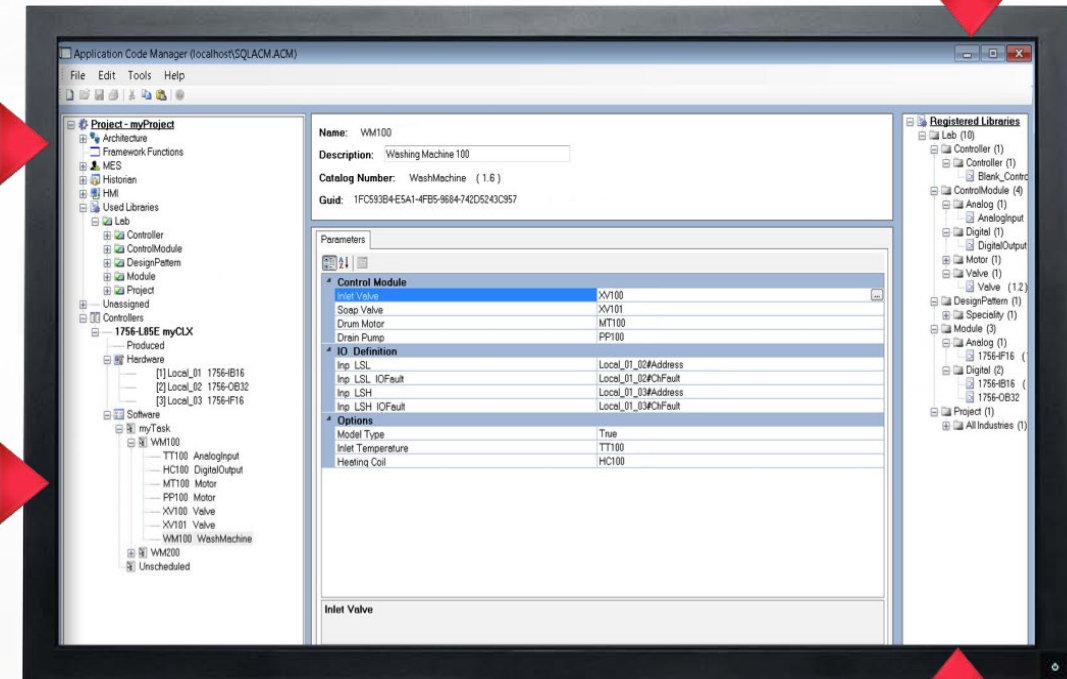
Studio 5000 Application Code Manager helps speed system development by building libraries of re-usable code that can be managed and deployed across the entire enterprise. Creating projects with Application Code Manager helps improve design consistency, reduce engineering costs and achieve faster commissioning.

- Easily create and configure objects in bulk using re-usable libraries of code to increase application development, without any additional programming
- The auto content generation feature creates not only the controller code for the modular object, but also the associated visualization, historical and alarming data — helping to build projects more efficiently

Easily import and export configuration data using Microsoft Excel

Project Explorer shows all of the configured objects in your automation project

Quickly and easily configure modular objects through simple parameter configuration



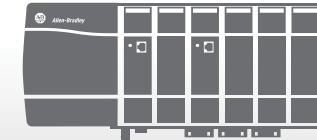
Manage your comprehensive library of reusable content across projects

Accelerate Project Creation Using Re-usable Content

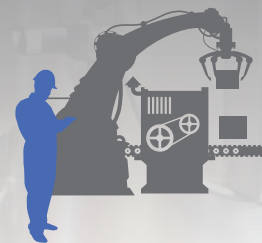
Studio 5000 Logix Emulate

Studio 5000 Logix Emulate increases design productivity, reduces risk and decreases overall project costs. It is the core of Studio 5000 virtual design; enabling Machine Prototyping, Throughput Analysis, Virtual Commissioning and Operator Training Systems (OTS). Logix Emulate provides the ability to validate, test and optimize application code independent of physical hardware. Interface capabilities provide connectivity to 3rd party simulation and OTS, enabling users to simulate their entire process and train teams in a safe, virtual environment.

- Simulate discrete Input/Output (I/O) and Logix5000 based controllers
- Simplify troubleshooting by utilizing advanced debugging to support code validation and virtual commissioning
- Easily adjust execution speeds to identify potential issues long before they are found in a production system
- Integrate into high fidelity process simulation systems for operator and situational based training



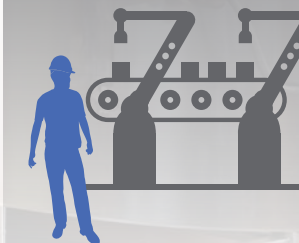
**MACHINE
PROTOTYPING**



**THROUGHPUT
ANALYSIS**



**VIRTUAL
COMMISSIONING**



**OPERATOR TRAINING
SYSTEMS (OTS)**



Simulate Your System in a Safe, Virtual Environment

Studio 5000 Software Package Options

Studio 5000 Edition	Toolkits	Professional	Full	Standard w/ Networx	Standard	Lite	Mini	Service
Architect	✓	✓	✓	✓	✓	+	+	+
Logix Designer	✓	✓	✓	✓	✓	✓	✓	✓
View Designer	✓	✓	✓	✓	✓	✓	✓	✗
Logix Emulate*	✓	✓	+	+	+	+	+	+
Application Code Manager	🛒	🛒	🛒	🛒	🛒	🛒	🛒	🛒

 **Included**
 **By Subscription**
 **Add-on Purchase**
 **Not Included**

* Logix Emulate is included in the Professional Edition and Toolkits. Logix Emulate for Operator Training is a standalone license and must be purchased separately.






Connect with us.

Allen-Bradley, ControlLogix, CompactLogix, Logix 5000, Logix Emulate, Studio 5000 Automation Engineering & Design Environment, Studio 5000 Architect, Studio 5000 View Designer, Studio 5000 Logix Designer, Studio 5000, PanelView, and Rockwell Automation are trademarks of Rockwell Automation, Inc.

All other trademarks and registered trademarks are the property of their respective owners.

www.rockwellautomation.com

Power, Control and Information Solutions Headquarters

Americas: Rockwell Automation, 1201 South Second Street, Milwaukee, WI 53204-2496 USA, Tel: (1) 414.382.2000, Fax: (1) 414.382.4444

Europe/Middle East/Africa: Rockwell Automation NV, Pegasus Park, De Kleetlaan 12a, 1831 Diegem, Belgium, Tel: (32) 2 663 0600, Fax: (32) 2 663 0640

Asia Pacific: Rockwell Automation, Level 14, Core F, Cyberport 3, 100 Cyberport Road, Hong Kong, Tel: (852) 2887 4788, Fax: (852) 2508 1846

Publication 9324-PP006G-EN-P – September 2016
Supersedes Publication 9324-PP006F-EN-P – November 2015

Copyright © 2016 Rockwell Automation, Inc. All Rights Reserved. Printed in USA.